



JIANGSU LONGEN POWER TECHNOLOGY CO., LTD.

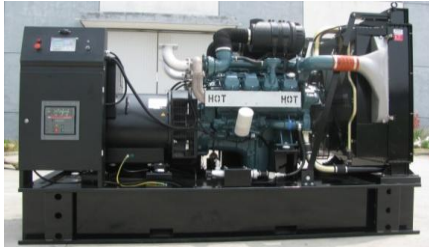
Diesel Generating Set LGDO-825

50Hz

General Features

- **Engine** DP222LCF DOOSAN Made in Korea
- **Alternator** ECO40 VL4A MeccAlte Made in China
- **Controller** DSE7320 Deepsea Made in UK

| | |
|---------------|--------------|
| Prime power | 600KW/750KVA |
| Standby power | 660kW/825kVA |



- Electric speed control
- 24V starting batteries, maintenance-free type, connecting cables
- Equipped with CHINT MCCB; ABB in Option
- Equipped with industrial silencer and flexible exhaust hose
- Radiator 40°C max, fans are driven by belt with safety guard

- 24V charge dynamo
- Equipped with 8-hours operation base tank
- Design comply to ISO8528/GB2820
- Absorber (anti instant braking)
- User manual, Packing list

General Ratings

| Voltage | Power | | | | Frequency (Hz) | Phase | P.F (COSφ) | Prime Current (A) |
|----------|-------|-----|---------|-----|-------------------|-------|---------------|----------------------|
| | Prime | | Standby | | | | | |
| | kw | kva | kw | kva | | | | |
| 415/240V | 600 | 750 | 660 | 825 | 50 | 3 | 0.8 | 1043.4 |
| 400/230V | 600 | 750 | 660 | 825 | 50 | 3 | 0.8 | 1082.6 |
| 380/220V | 600 | 750 | 660 | 825 | 50 | 3 | 0.8 | 1139.5 |

Prime power

This rating is for the supply of continuous electrical power at variable load. A 10% overload capability is available for a period of 1 hour within each 12-hour period of operation.

Standby power

This rating is for the supply of continuous electrical power at variable load in the event of utility power failure. No overload is permitted.

Rated voltage

Available with customers requirements.

Sales Promise

LONGEN POWER provides a full line of 100% brand new and high quality products.

Each and every unit is strictly factory tested before delivery.

Warranty is according to below standard conditions, subject to the earlier one.

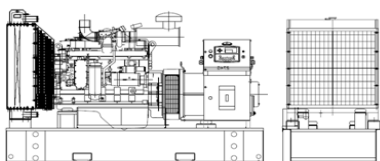
1. 15 months, counted on the day LONGEN sold to the first buyer.
2. One year after installation.
3. 1500 running hours.

Service and parts are available from LONGEN or distributors in your location.

Dimension And Weight

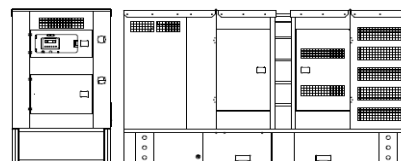
Open frame

Size(LxWxH):4000X1400X2000(mm)
N.W.:4800 (kgs)



Silent with Canopy

Size(LxWxH):5200X1700X2400(mm)
N.W.:5700 (kgs)





JIANGSU LONGEN POWER TECHNOLOGY CO., LTD.

Diesel Generating Set LGDO-825

50Hz

Engine Specifications

| | | |
|----|---------------------------------------|---|
| 1 | Engine model | DP222LCF |
| 2 | Engine manufacturer | Doosan |
| 3 | Number of cylinders | V12 |
| 4 | Cylinder arrangement | Vertical in line |
| 5 | Cycle | 4 stroke |
| 6 | Aspiration | Turbocharged & Intercooled (Air to Air) |
| 7 | Bore×Stroke(mm×mm) | 128 x 142 |
| 8 | Displacement (Liter) | 21.927 |
| 9 | Compression Ratio | 15:1 |
| 10 | Prime power/speed (kW/RPM) | 657/1500RPM |
| 11 | Standby power/speed (kW/RPM) | 723/1500RPM |
| 12 | Speed governor | Electric |
| 13 | Cooling system | Water-cooled |
| 14 | Coolant capacity (engine only) (L) | 23 |
| 15 | Steady speed droop (%) | ≤5% |
| 16 | Total lubrication system capacity (L) | 40 |
| 17 | Oil consumption (% of fuel) | <0.15% |
| 18 | Fuel consumption at 100% load (L/H) | 161 |
| 19 | Fuel consumption at 75% load (L/H) | 119.1 |
| 20 | Fuel consumption at 50% load (L/H) | 79.3 |
| 21 | Starter motor | 24 V×7.0kW |
| 22 | Dynamo | 27.5V×45A |

Alternator Specifications

Compliance with GB755,BS5000,VDE0530,NEMAMG1-22,IED34-1,CSA22.2 and AS1359

| | | |
|----|--------------------------|---|
| 1 | Alternator model | ECO40 VL4A |
| 2 | Alternator manufacturer | MeccAlte |
| 3 | Exciter type | Single bearing, Brushless, Self-excited |
| 4 | Rated output prime power | 720KVA |
| 5 | Rated speed | 1500 RPM |
| 6 | Rated frequency | 50 Hz |
| 7 | Phase | 3 |
| 8 | Rated voltage | 400V |
| 9 | Power factor | 0.8 |
| 10 | Voltage adjust range | ≥5% |
| 11 | Voltage regulation NL-FL | ≤±1% |
| 12 | Insulation grade | H |
| 13 | Protection grade | IP23 |

Alternator option

Mecc Alte, Stamford, Longen

Main Electrical Performance Data

| Stable Regulation rate | Voltage | | | Frequency | | | |
|------------------------|-------------|--------------|-------------------------------|------------------------|-------------------------------|--------------|-------------|
| | Fluctuation | Recover time | Instantaneous Regulating rate | Stable regulation rate | Instantaneous regulating rate | Recover time | Fluctuation |
| +/-2.5% | 0.5% | 1.5s | +20%/-15% | +5% | +/-10% | 5S | 0.5% |






JIANGSU LONGEN POWER TECHNOLOGY CO., LTD.

Diesel Generating Set LGDO-825

50Hz

Control System

| Deepsea (UK) | Model | DSE7320 |
|---|---|---|
| Protection | Parameter | PHOTO |
| <ul style="list-style-type: none"> • Low oil pressure • High water temp • Over speed • over crank • Over load • Over/low volt • Over/low frequency • Battery charge failure | <ul style="list-style-type: none"> • Volt • current • power • speed • frequency • oil pressure • oil temp • power factor • running time • water temp • battery voltage |  |

Option

Generator Set

- Trailer generator set
- ABB MCCB circuit breaker
- 50°C Radiator

Fuel system

- 12 hours base fuel tank
- 24 hours base fuel tank
- Dual wall base fuel tank
- External fuel tank

Exhaust system

- Residential exhaust silencer

Alternator

- PMG excitation
- Anti Condensation Heater

For cold area

- Water heater
- Oil heater
- Rapid water preheater (diesel burner)

Auto system

- Remote Control panel
- ATS control cabinet
- Paralleling System

External ATS



Water Heater



Oil Heater



Paralleling System



Contact Us

JIANGSU LONGEN POWER TECHNOLOGY CO., LTD.

No. 36 Donghai Rd, Binhai Industrial District, QiDong, Jiangsu, PR.China

Tel: +86 513 83833300 Fax: +86 513 83833306

Website: www.long-gen.com

LONGEN POWER reserves the right to change the specifications and design without notice.

